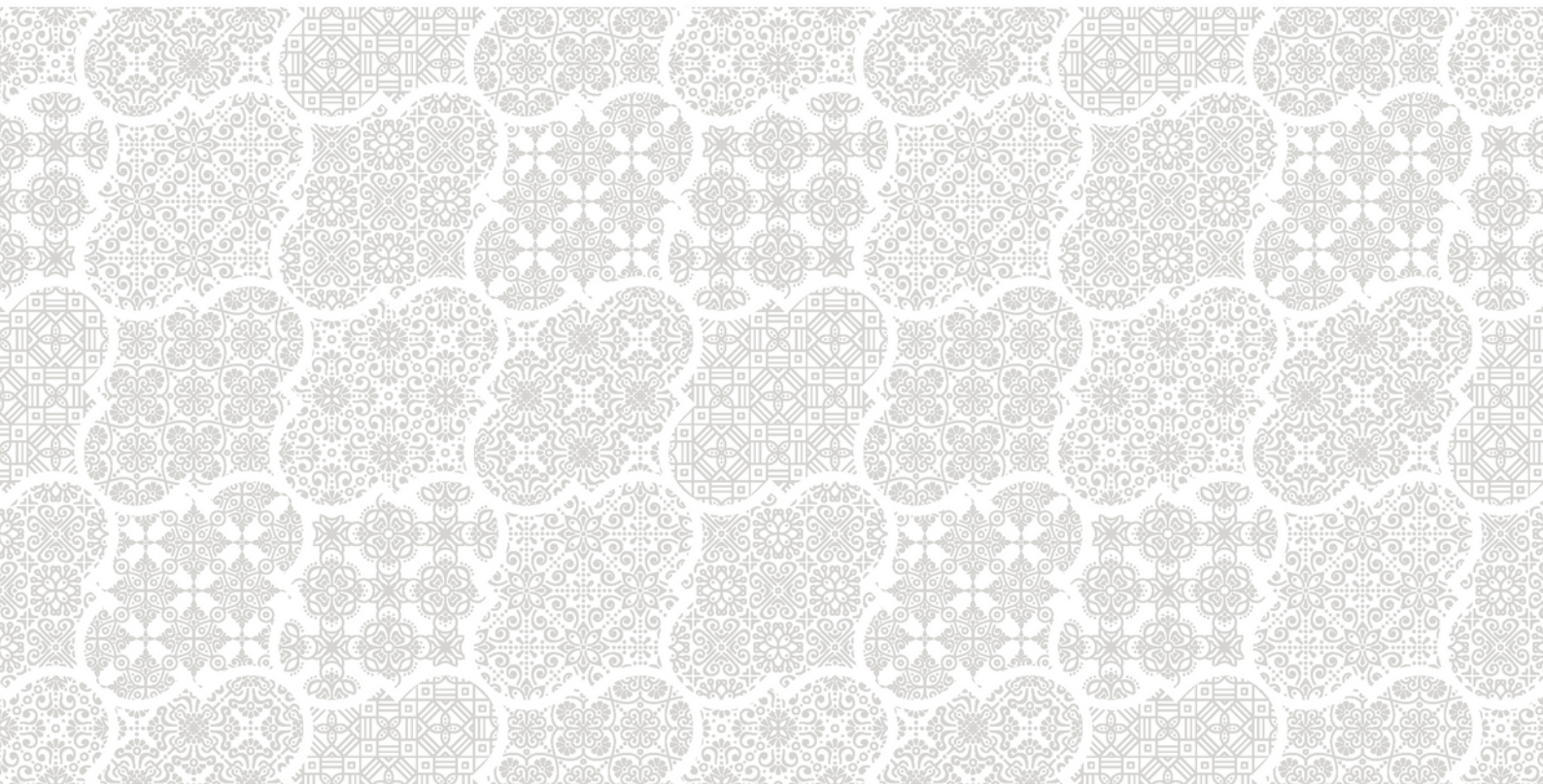


KSV2201

# Kampung Nan Jauh di Mato

Arr. Ken Steven

SA div, piano



MUZIKSEA

## Arranger's note

A Minangkabau folk song from West Sumatera, *Kampung Nan Jauh di Mato* literally translates to "a village (or hometown) that is far from the eyes." This song beautifully captures the emotions of someone who is far away from home and longing to return. The lyrics vividly depict the nostalgic memories shared with dear friends, creating a heartfelt longing for the past.

<b>Minangkabau Lyrics</b>	<b>English Translation</b>
Kampung nan jauh dimato, Gnung sansai bakuliliang	My village is far from my sight, surrounded by hills and mountains
Ta kana jo kawan kawan nan lamo, Sangkek basuliang suliang	Missing my old friends, the time when we played the flute together
Panduduaknyo nan elok, Nan suko bagotong royong	The people are kind and like to help one another
Sakek sanang samo samo di raso, Den Takana jo kampung	For better or worse we went through together, I miss my village
Takana, jo kampung, Induk ayah adiak sadonyo	I miss my village, my mother, father, brothers, and sisters
Raso mangimbau ngimbau den pulang, Den ta kana jo kampung	Feels like they are calling me home, I miss my village

# Kampung Nani Jauh di Mato

for SA with piano accompaniment

Minangkabau folk song  
West Sumatera, Indonesia

Composed by A. Minos  
Arranged by Ken Steven

Happily ♩ = 100

Soprano

Alto

Piano

*mf*

*mf*

*f*

A

A tr

5 Moderato ♩ = 80

S

A


Pno.

*mf*

Moderato ♩ = 80

puang nan ja-uh di ma - to gu-nuang san - sai ba - ku - li - liang. Ta-ka-

puang na ja-uh di ma - to gu-nuang san - sai ba - ku - li - liang. Ta-ka-

 Unauthorized duplication  
of this score is illegal

9

S  
na jo ka - wan ka-wan nan la-mo sang-kek ba-su - liang-su-liang. Ta-ka-

A  
na jo ka - wan ka-wan nan la-mo sang-kek ba-su - liang-su-liang.

Pno.

13

S  
na jo kam-puang in-duk a - yah a-diak sa-do - nyo. Ra-so-ma

A  
Ta-ka-na jo kam-puang in-duk a-yah a-diak sa-do a-diak sa-do-nyo. Ra-so-ma

Pno.

17

S  
ngim - bau - ngim - bau den pu - lang den ta-ka-na jo kam-puang.

A  
ngim - bau - ngim - bau den pu - lang den ta-ka-na jo kam-puang.

Pno.

21 **B** Lively ♩ = 110

S *f* Pan-

A *f* Pan-

Pno. *f*

25

S du - duk nyo\_ nan e-lok\_ nan su-ko ba-go - tong - ro - yong. Kok su- sah

A du - duk nyo\_ na e-lok\_ nan su-ko ba-go - tong ro - yong. Kok su- sah

Pno.

29

S sa - mo - sa - mo\_ di-ra-so. den ta-ka-na\_ jo kam-puang. Ta-ka-na

A sa - mo - sa - mo di-ra-so. den ta-ka-na jo kam-puang.

Pno.

33

S jo kam-puang — in-duk a - yah a-diak sa-do- nyo.

A Ta-ka-na — jo kam-puang — in-duk a - yah a-diak sa-do- nyo.

Pno.

36

S — Ra-so ma-ngim -bau -ngim - bau den pu - lang den ta-ka-na jo kam-puang.

A — Ra-so ma-ngim -bau -ngim - bau den pu - lang — den ta-ka-na jo kam-puang.

Pno.

40

S — Ta - ka - na — jo kam - puang. in-duk

A — Ta - ka - na — jo kam-puang — in-duk

Pno.

This page is intentionally left blank.

To purchase the score, please visit  
**[www.muziksea.com](http://www.muziksea.com)**

**MUZIKSEA**

54

S na jo ka - wan - ka-wan nan la-mo sang kek ba-su - liang su-liang. Ta-ka-

A na jo ka - wan - ka-wan nan la-mo sang kek ba-su - liang su-liang.

Pno.

58

S na jo kam puang in-duk a - yah a-diak sa-do - nyo. Ra-so ma

A Ta-ka-na jo kam-puang in-duk a-yah a-diak sa-do a-diak sa-do nyo. Ra-so ma

Pno.

62

S ngim - bau - ngim - bau den pu - lang den ta-ka-na jo kam - puang. Ta-ka-na *f*

A ngim - bau - ngim - bau den pu - lang den ta-ka-na jo kam-puang.

Pno.



66 Lively ♩ = 110

S jo kam- puang\_ in-duk a - yah a-diak sa-do- nyo.

A *f* Ta-ka-na\_ jo kam-puang\_ in-duk a - yah a-diak sa-do- nyo.

Pno. Lively ♩ = 110

69

S Ra-so ma-ngim - bau - ngim - bau den\_ pu - lang den ta-ka-na\_ jo kam- puang

A Ra-so ma-ngim - bau - ngim - bau den pu - lang. den ta-ka-na jo kam - puang

Pno.

73 rit. . . . .

S den ta - ka - na\_ jo kam -

A den ta - ka - na\_ jo kam -

Pno. rit. . . . .

77 *a tempo* *accel.* . . . . .

S  
puang.

A  
puang.

*a tempo* *accel.* . . . . .

Pno.