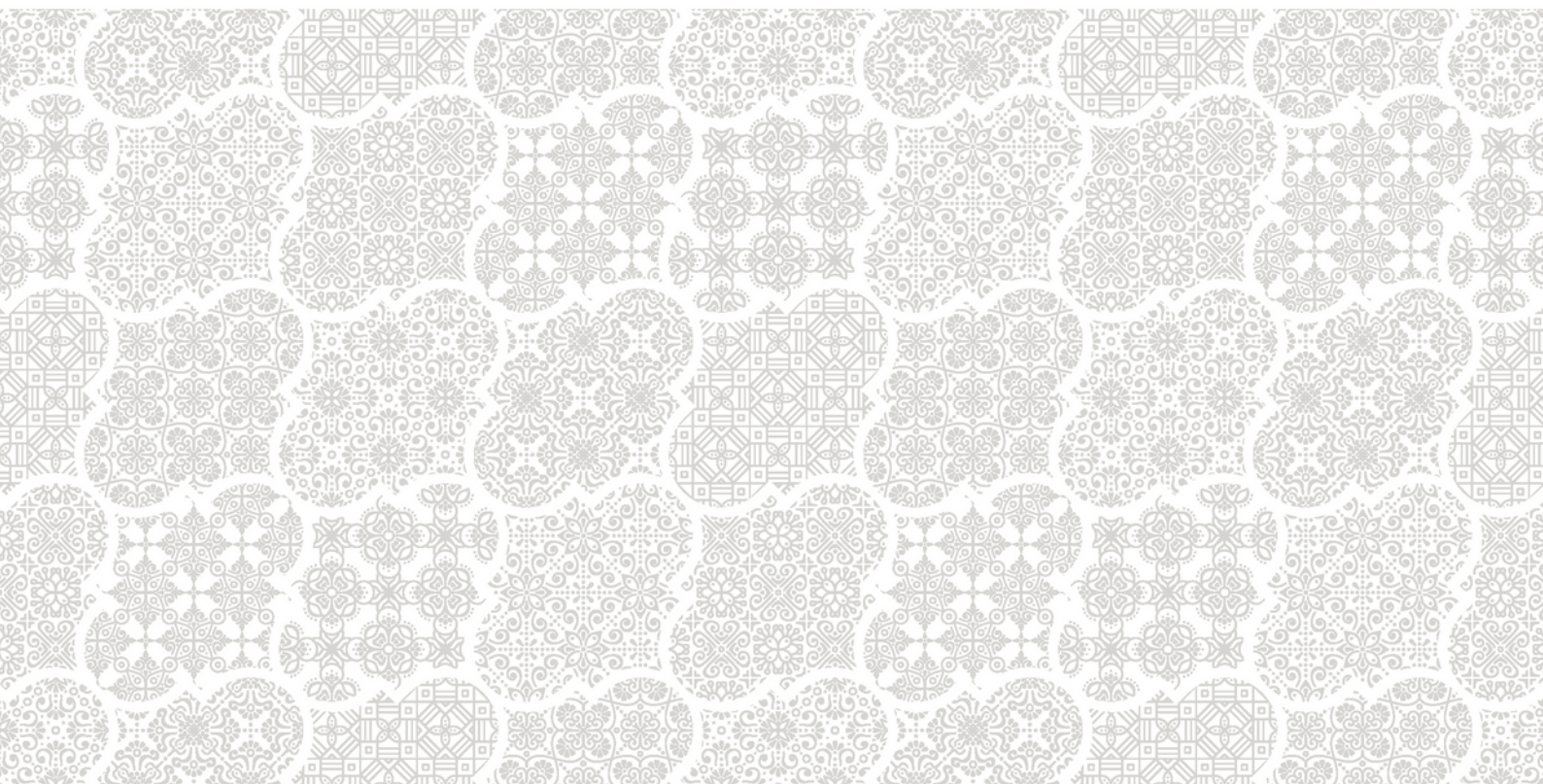


GTC1103

Arr. Zechariah Goh

# Dayong Sampan

SATB divisi, unaccompanied



MUZIKSEA

## **Composer's note**

*Dayong Sampan* was commissioned by Temasek Junior College in 1993, and it was one of Goh's earliest a cappella compositions. This piece is based on a Malay folk song of the same title and tells the story of the early immigrants' journey to Singapore. The introduction depicts the misty dawn at sea before reaching the shores of Singapore. It is also a metaphor for the immigrants' struggles in a multilingual and multiracial society. The entire melody is presented in the middle section of the song which depicts the harmonious and peaceful gathering of people singing together. The song gradually picks up the pace to a stormy section that represents the various difficulties that comes with independence and subsequent nation building. Towards the end, the piece reminiscences the early days when our forefathers first arrived in Singapore.

# Dayong Sampan

Arranged by Zechariah Goh Toh Chai

Freely reverberate  
and with nostalgia (♩ = ca. 55-60)

Solo *c*

*f*  
Da - yong Da - yong sam - pan

Soprano 1 *fp*  
Da

Soprano 2 *f fp*  
Da - yong

Alto 1 *fp*  
Sam

Alto 2 *f fp f*  
Sam - pan Ah


Tenor 1 *fp f*  
Da Ah

Tenor 2 *f fp f*  
Da - yong Ah

Bass 1 *fp f*  
Sam Ah

Bass 2 *f fp f*  
Sam - pan Ah

Keyboard reduction  
(for rehearsal use only.)

 Unauthorised duplication  
of this score is illegal.

**A tempo**

Solo *ff* *end of solo*

S1 *fp* *molto rit.* Ah Da doom *p*

S2 *f fp* Da - yong doom *mp*

A1 *fp* Sam doom *mp*

A2 *f fp* Sam - pan doom *mp*

T1 *fp* Da doom *mp*

T2 *f fp* Da - yong doom *mf*

B1 *f fp* Sam - pan doom *mf*

B2 *f fp f* Da - yong Sam - pan doom *f*

KR *molto rit.*

con moto ♩ = 72

5

*mf* *con espressivo*

S1 Da - yong sam - pan Da - yong sam - pan

S2 Da - yong sam - pan Da - yong sam - pan

A Da - yong sam - pan Da - yong sam - pan

T1 Da - yong sam - pan Da yong sam - pan

T2 Da - yong sam - pan Da yong sam - pan

B1 Da - yong sam - pan Da - yong sam - pan

B2 Da - yong sam - pan Da - yong sam - pan

*mf* *con espressivo*

KR

con moto ♩ = 72

8

**f** **p**

S1 Da - - yong sam - - pan

S2 Da - - yong sam - - pan

**f** **p**

A Da - yong sam - pan Da - yong sam - pan

**f** **p**

T1 Da - - yong sam - - pan

**f** **p**

T2 Da - - yong sam - - pan

**f** **mf** **p**

B Da - yong sam - pan Da - yong sam - pan

KR

10 **Allegretto con brio** ♩ = 76

S

A

T

B

KR

*f* Da - yong\_

*f* Da - yong sam-pan ke Sin - ga - pu - ra, ke Sin - ga - pu

*f* Da - yong sam-pan ke Sin-ga-pu - ra Da-yong sam-pan ke Sin - ga - pu-ra, Sin-ga-pu

14

S

A

T

B

KR

*f* Da - yong sam - pan ke Sin - ga - pu -

— sam - pan ke Sin - ga - pu - ra, Da - yong sam - pan, Da - yong,

ra, Da - yong sam-pan ke Sin - ga - pu - ra, Da - yong sam - pan Da - yong

ra, sam-pan ke Sin - ga - pu - ra, Da - yong, Da - yong

16 *rit.* *p*

S ra Da-yong sam pan, Da - yong sam - pan.

A Da-yong, Da-yong sam - pan, Da - yong sam-pan, da - yong sam - pan.

T Da - yong sam - pan, Da - yong sam-pan Da - yong.

B sam - pan, Da - yong sam-pan, Da - yong sam - pan.

*rit.* *p*

KR

20 *Misterioso* ♩ = 90

S Da - yong sam - pan, Da - yong sam - pan,

A Da - - yong sam - - pan,

T Da - - yong sam - - pan,

B Da - yong sam - pan, Da - yong sam - pan, Da - yong sam - pan,

KR



24 **rall.**

S Da - yong sam - pan, Da - yong.

A Da - - - yong sam - pan.

T Da - - - - - yong.

B Da - yong sam - pan, Da - yong sam - pan,

KR **rall.**

**mf** *accelerando e crescendo*

27

S Da - yong sam - pan Da - yong sam - pan Da - yong sam - pan

A Da - yong sam - pan Da - yong sam - pan Da - yong

T Da yong Sam - pan Da - yong sam - pan

B Da - yong sam - pan Da - yong

KR

31  $\text{♩} = 116 - 126$

S Da - yong sam - pan Da - yong sam -

A sam - pan Da - yong Da - yong sam -

T Da - yong sam - pan Da - yong sam -

B sam - pan - Da - yong Da - yong sam -

KR

34 *ff*

S pan, Da - yong sam - pan.

A pan, Da - yong sam - pan.

T pan, Da - yong sam - pan.

B pan, Da - yong sam - pan.

KR

## Cantabile con espressivo ♩ = 66-72

38 *mf*

S Da - yong sam - pan, Da - yong, Da-yong sam - pan

A *mf*  
Da - yong sam - pan, Da - yong, Da-yong sam - Da - yong sam - pan

T *mf*  
Da - yong sam - pan, Da - yong, Da-yong sam - pan

B *mf*  
Da - yong sam - pan, Da - yong Da - yong sam - pan

KR *mf*

42 *p* *mf*

S Ber - la-buh da - tang ban-dar Chi - na Sam - pai Sin-ga - pu - ra.

A *p* *mf*  
Ber - la-buh da - tang ban-dar Chi - na Sam - pai Sin-ga - pu - ra.

T *p* *mf*  
Ber - la-buh da - tang dan-dar Chi - na Sam - pai Sin-ga - pu - ra.

B *p* *mf*  
Ber - la-buh da - tang ban-dar Chi - na Sam - pai Sin - ga - pu - ra.

KR

47 **Con moto** ♩ = 90  
*mp*

S Da - yong sam - pan Da - yong, Da - yong sam - pan

A Da - yong sam - pan Da - yong, Da - yong sam - pan

T Da - yong Da - yong, Da - yong sam - pan

B Da - yong Da - yong, Da - yong sam - pan

KR

51 *p*

S Da - yong men - da - yong sam - pan sam - pai ke Sin - ga - pu - ra

A Da - yong men - da - yong sam - pan sam - pai ke Sin - ga - pu - ra

T Da - yong men - sa - yong sam - pan - ke Sin - ga - pu - ra

B Da - yong men - sa - yong sam - pan - ke Sin - ga - pu - ra

KR

56 *mf*

S Da - yong men - da - yong sam - pan ke Sing - a - pu - ra Da -

A *mf*  
Da - yong sam - pan, Da - yong sam - pan, Da - yong sam - pan, Da - yong sam - pan,

T *mf*  
Da - yong sam - pan, Da - yong

B *mf*  
Da - yong sam - pan, Da - yong

KR

60 *f*

S yong, Da - yong, Da - yong sam - pan.

A *f*  
Da - yong sam - pan, Da - yong sam - pan, Da - yong sam - pan

T *f*  
sam - pan, Da - yong.

B *f*  
sam - pan, Da - yong.

KR

This page is intentionally left blank.

To purchase the score, please visit  
**[www.muziksea.com](http://www.muziksea.com)**

**MUZIKSEA**

Freely reverberate  
and with nostalgia (♩ = ca. 55-60)

69

Solo *f* Solo *f*

Da - yong Da - yong sam - pan

S1 *fp* rit.

S2 *f* *Da* *fp*  
Da yong

A1 *fp*  
Sam

A2 *f* *fp*  
Sam - pan Ah

T1 *fp*  
Da Ah

T2 *f* *fp*  
Da - yong Ah

B1 *fp*  
Sam Ah

B2 *f* *fp*  
Sam - pan Ah

KR rit.

A tempo

71 *f*

Solo *f* Ah

S1 *f* Da - yong *p* doom

S2 *f fp* Sam - pan *mp* doom

A1 *f fp* Da - yong *mp* doom

A2 *f fp* Sam - pan *mp* doom

T1 *f fp* Da - yong *mp* doom

T2 *f fp* Sam - pan *mf* doom

B1 *f fp* Da - yong *mf* doom

B2 *f fp* Sam - pan doom

KR



73 *mf*

S Da - yong sam - pan sam - pan

A *mf* Da - yong sam - pan Da - yong sam - pan

T *mf* Da - yong sam - pan, sam - - - pan

B *mf* Da - - yong sam - pan, sam - - - pan

KR

76 *ff* *rit.* *mf*

S Da - yong sam - pan. Da - yong.

A *ff* *mf* Da - yong Sam - pan. Da - yong.

T *ff* *mf* Da - yong sam - pan. Da - yong.

B *ff* *mf* Da - yong sam - pan. Da - yong.

KR